

M.V. CEMISLE

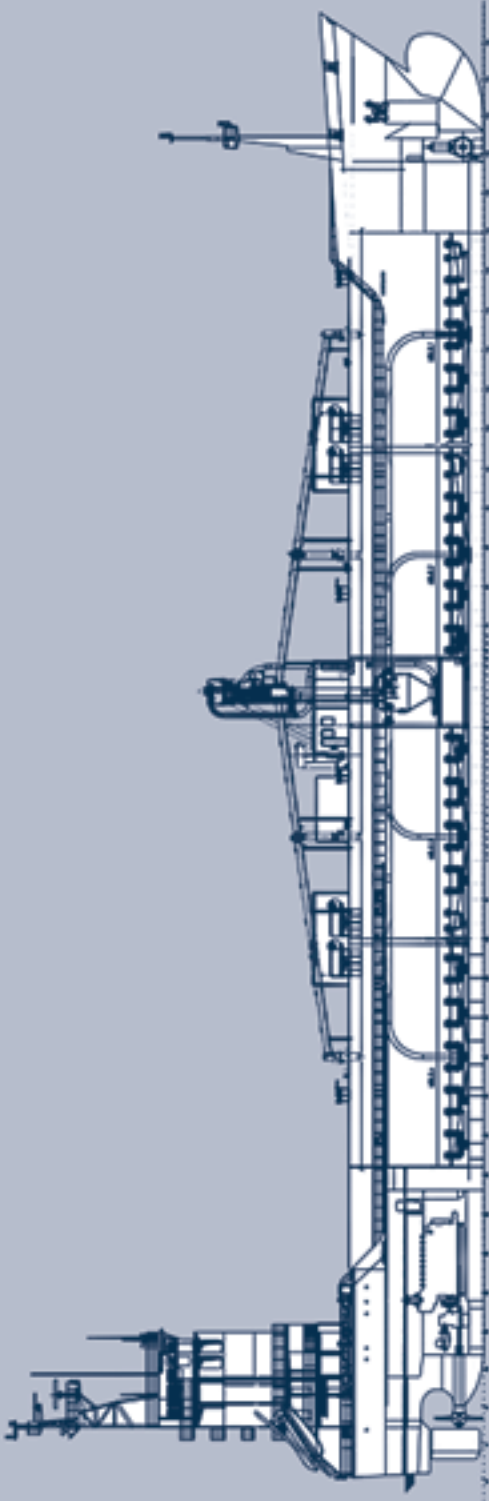


TYPE OF VESSEL	cementcarrier with pneumatic loading and selfdischarging equipment	
FLAG	Antigua & Barbuda	
BUILT	2000	
CONVERTED	02/2009	
MANAGEMENT	German	
CALLSIGN	V 2 E E 4	
CREW	International Crew / ITF fitted	
CLASS	GL + 100 A5E1	
IMO NO.	9213911	
DWAT	abt. 6.885 mts (summer)	
DWCC / DRAFT	abt. 6.750 mts of blk cement on abt. 6,67 m sfb abt. 5.800 mts fly ash on 0,8 mt/cbm	
DIMENSIONS	length over all	119,95 m
	beam	16,60 m
TONNAGE	GT 5.133 and NT 2.346	
HOLD CAPACITY	4 holds with total capacity abt 7.300 cbm	
LOADING EQUIPMENT	by gravity via one central inlet on portside (600 mm dia.) or by pneumatic loading via eight (plus additional 4 points via central loading system (2 each hold)) „stortz“ couplings (100 mm / 4“) for loading from trucks / waggons at a rate upto 400 mts/hr	
LOADING CON.	abt. 1,7 mts gasoil per day	
DISCHARGING EQUIPMENT	by pneumatic / mechanical discharge at an average of abt. 250-300 mts/hr to shore connections, via one 12“ outlet pipe, placed midships on portside and starboard side. rate based on a distance of up to 100 m horizontal and up to 30 m elevation; a discharge into trucks / railwaggons (mechanical) is also possible at a rate of abt 150 mts/hr but from starboard side	
DISCHARGING CON.	abt 4,0 mts gasoil per day with discharge equipment at full capacity	
MAIN ENGINE	MAN 8L32/40, 3.840 KW	
GENERATORS	2 x diesel with 1000 kVA each	
SPEED / CONSUMPTION	abt. 13,0 knots on abt. 13,5 mts (IFO 380 + 0,3 Gasoil) abt. 12,0 knots on abt. 12,5 mts (IFO 380 + 0,3 Gasoil)	
TANKS	HFO abt. 268 mts, Gasoil abt. 109 mts, Ballast water abt. 2.569 cbm, Freshwater abt. 82 cbm	
BOWTHRUSTER	250 KW	
COMMUNICATION	via GSM, E-Mail	

All details believed to be correct, given in good faith but without guarantee.



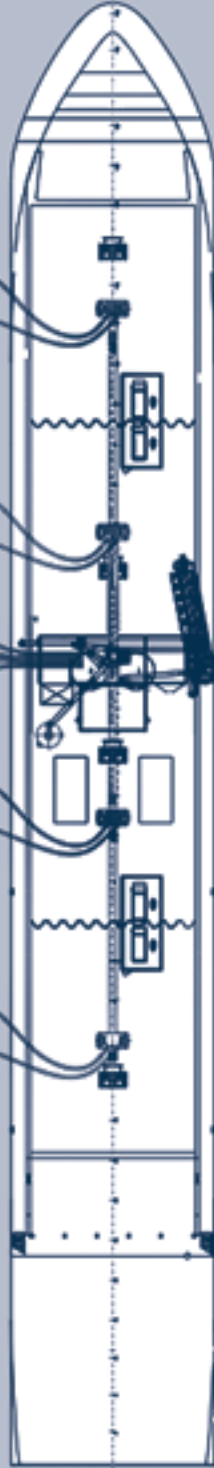
BALTRADER Schiffahrt Hamburg



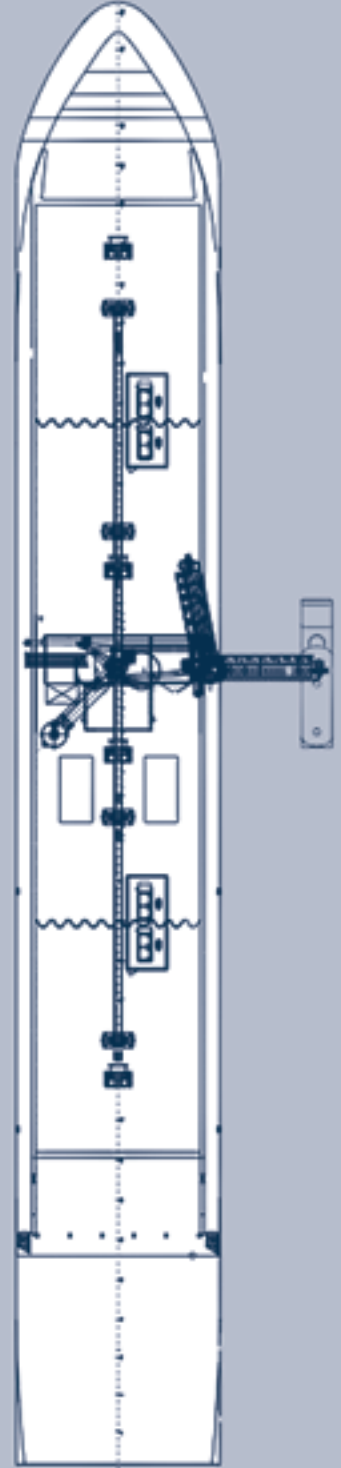
CEMISLE

4x OPTIONAL

LOADING 400 TPH

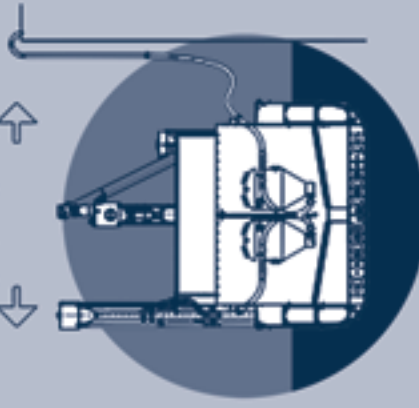


UNLOADING 300 TPH



PNEUMATICAL DISCHARGE
VIA OUTLET PIPE

6"/8"/10"/12"/14"



MECHANICAL DISCHARGE
INTO TRUCKS / RAILWAGGONS

